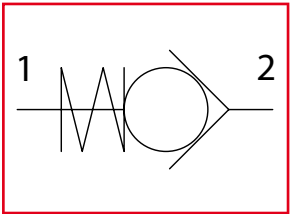




# VUR-NPTF

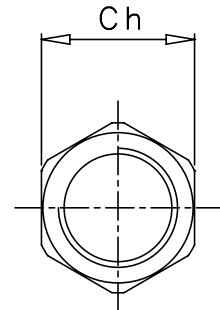
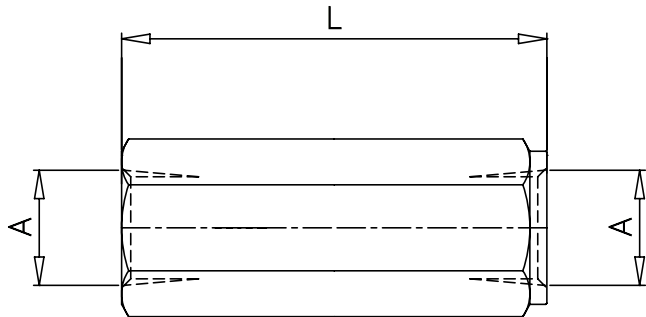
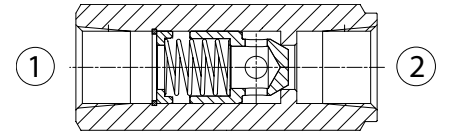
Valvole unidirezionali  
Check valves



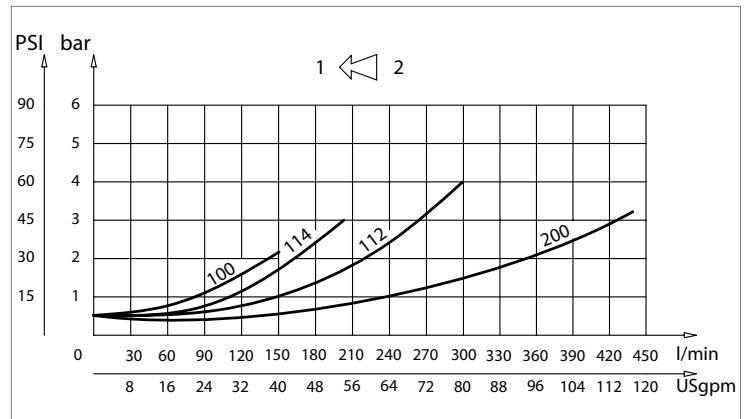
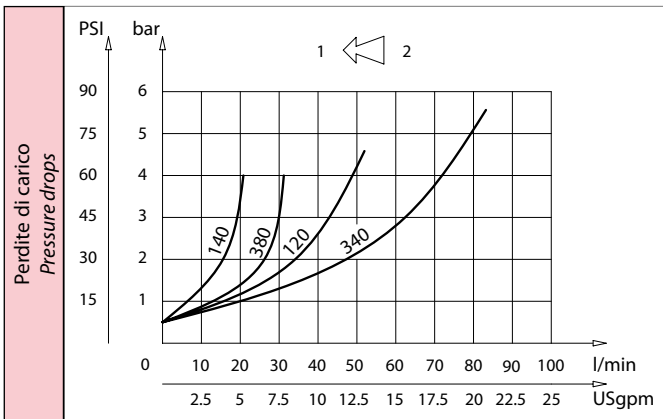
**LEHENGOMAK, S. A.**



Dati tecnici Technical data	
Viscosità fluido Fluid viscosity	10-500 mm <sup>2</sup> /s 45 to 2000 ssu (6 to 420 cSt)
Classe di contaminazione Filtration	ISO code 16/13 SAE class 4 or better
Temperatura fluido Fluid temperature	-20°C +80°C -4°F +176°F
Temperatura ambiente Ambient temperature	-20°C +50°C -4°F +122°F



mm  
(Inches)



Caratteristiche tecniche Technical performances						
Codice Code	A	Portata Max Max flow l/min - USgpm	Pressione Max Max pressure bar/PSI	L	Ch	Peso approssimativo Approx weight Kg / lb
VUR 140 NPTF	1/4 NPTF	15 (4)	400 (5800)	58 (2.28)	19 (0.75)	0,10 (0.22)
VUR 380 NPTF	3/8 NPTF	30 (8)		69 (2.72)	24 (0.94)	0,18 (0.40)
VUR 120 NPTF	1/2 NPTF	50 (13)		75 (2.95)	27 (1.06)	0,31 (0.70)
VUR 340 NPTF	3/4 NPTF	90 (23)		88,5 (3.48)	35 (1.38)	0,45 (1)
VUR 100 NPTF	1 NPTF	150 (40)	350 (5000)	110 (4.33)	41 (1.61)	0,95 (2.10)
VUR 114 NPTF	1-1/4 NPTF	200 (50)		120 (4.72)	55 (2.16)	1,49 (3.30)
VUR 112 NPTF	1-1/2 NPTF	300 (80)		138 (5.43)	60 (2.36)	2,40 (5.30)
VUR 200 NPTF	2 NPTF	430 (110)		75 (2.95)	75 (2.95)	3 (6.60)

Codice ordinazione Ordering code			
<b>VUR-X-NPTF-Y-K</b>			
X	Dimensione / Size	Y	Tenuta / Sealing
140	1/4 NPTF	SP	Tenuta a cono Poppet sealing
380	3/8 NPTF		
120	1/2 NPTF		
340	3/4 NPTF		
100	1 NPTF	K	Molla / Spring
114	1 - 1/4 NPTF	1	1 bar Standard
112	1 - 1/2 NPTF	3	3 bar
200	2 NPTF	6	6 bar



**LEHENGOMAK, S. A.**